

MONTHLY MEMBERSHIP PROGRESS REPORT

LOCATION OHIO

District 13 OH7

Results as of: 4/30/2021

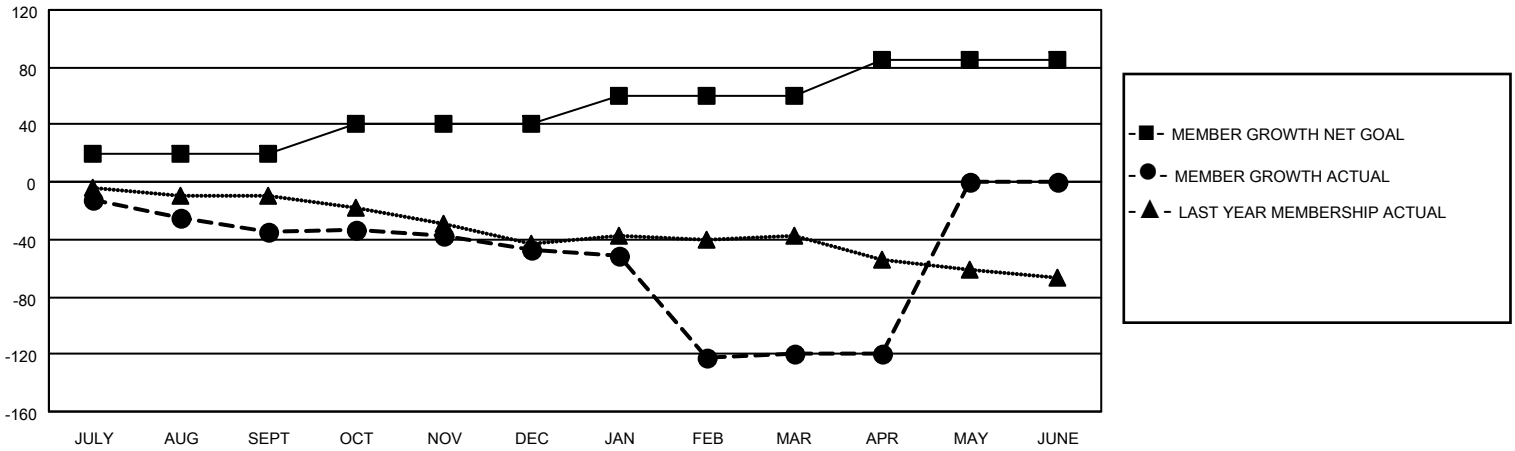
| Clubs | | | |
|-----------------------|---------------|-----------|---------------|
| RESULTS FOR 2020-2021 | | | |
| QUARTER | NEW CLUB GOAL | NEW CLUBS | DROPPED CLUBS |
| JULY/AUG/SEPT | 0 | 0 | 0 |
| OCT/NOV/DEC | 0 | 0 | 0 |
| JAN/FEB/MAR | 1 | 0 | 2 |
| APR/MAY/JUNE | 0 | 0 | 0 |

| Members | | | |
|-----------------------|------------------------|----------------------|---|
| RESULTS FOR 2020-2021 | | | |
| QUARTER | MEMBER GROWTH NET GOAL | MEMBER GROWTH ACTUAL | DROPPED MEMBERS ACTUAL (including transfers) |
| JULY/AUG/SEPT | 20 | 12 | 42 |
| OCT/NOV/DEC | 20 | 21 | 32 |
| JAN/FEB/MAR | 20 | 8 | 79 |
| APR/MAY/JUNE | 25 | 1 | 1 |

GOALS AND ACTUAL NEW CLUBS CUMULATIVE



GOALS AND ACTUAL MEMBERS CUMULATIVE



| | | |
|----------------------------------|---|--|
| DROPPED CLUBS: 2 | 16 CLUBS OF 53 ADDED 1 OR MORE NEW MEMBERS | <u>GENDER DISTRIBUTION</u> |
| <u>DROPPED MEMBERS</u> | CLICK HERE FOR CUMULATIVE MEMBERSHIP DATA | MALE 841 (65.70%) |
| DECEASED 18 | | FEMALE 439 (34.30%) |
| CLUB CANCELLED 65 | | TOTAL FAMILY UNIT MEMBERS 324 |
| OTHER 71 | | FAMILY MEMBERS PAYING HALF DUES 163 |
| TOTAL 154 | | |